



LIMPOPO

PROVINCIAL GOVERNMENT
REPUBLIC OF SOUTH AFRICA

TRADE & INVESTMENT OPPORTUNITIES IN THE LIMPOPO PROVINCE

RATHUMBU MI

DEPUTY DIRECTOR GENERAL: ECONOMIC DEVELOPMENT



LIMPOPO

PROVINCIAL GOVERNMENT
REPUBLIC OF SOUTH AFRICA

Table of Contents

- Limpopo Province at a glance
- Map of Limpopo
- Contribution to National GDP
- Sectoral contribution
- Provincial comparative & competitive advantage
- National Priority Sectors
- Targeted projects
- Sectoral information
- Key sectors for industrialization
- Investment opportunities within industrialization sectors
- Conclusion

The heartland of southern Africa - development is about people

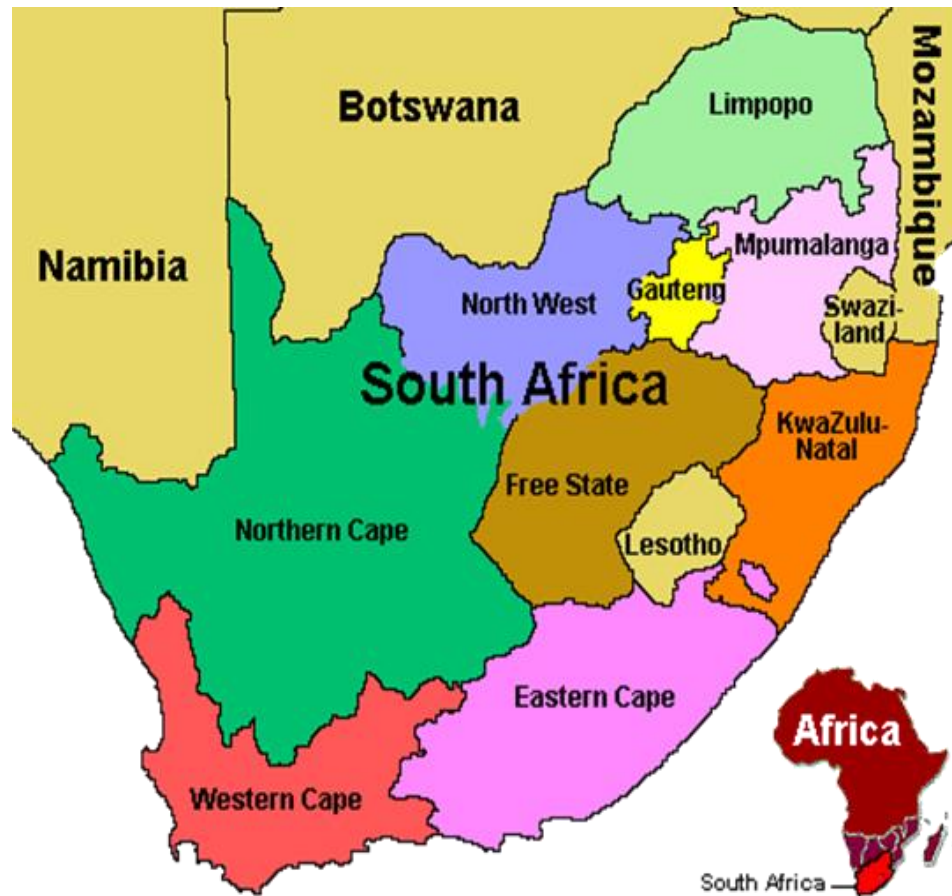


LIMPOPO

PROVINCIAL GOVERNMENT
REPUBLIC OF SOUTH AFRICA

Limpopo Province at a glance

- Borders: Mozambique (eastern), Zimbabwe (northern) and Botswana (western side)
- Easy access to other African markets: Sub-Saharan Africa & SADC in particular, with 330 million people
- Population: 5.7 million (10.2% of SA population)
- 63% of population been youth of working age
- Share of national land area: 10.3%
- Contribution to national GDP: 7.2%
- Relatively advanced economic infrastructure
- In close proximity to Gauteng (SA's economic hub)



The heartland of southern Africa - development is about people



LIMPOPO

PROVINCIAL GOVERNMENT
REPUBLIC OF SOUTH AFRICA

Map of the Limpopo Province



Legend

- Border Post
- National Roads
- Local Municipalities
- RSA Provinces
- African Countries

District Municipal Boundary

District Name

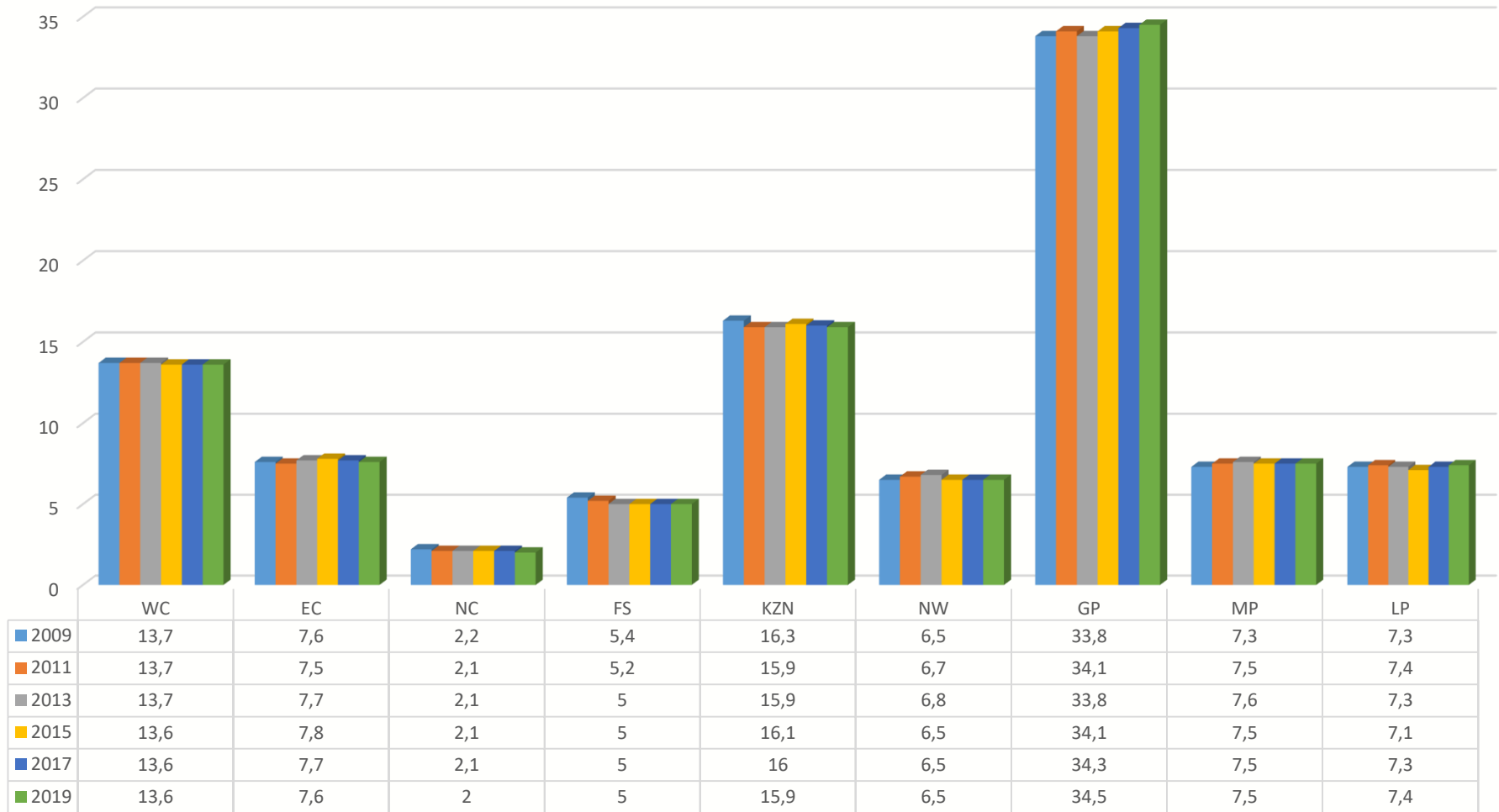
- Capricorn District Municipality
- Mopani District Municipality
- Sekhukhune District Municipality
- Vhembe District Municipality
- Waterberg District Municipality

The heartland of southern Africa - development is about people

GDP Contribution to National Economy



Provincial Contribution to National GDP 2009-2019



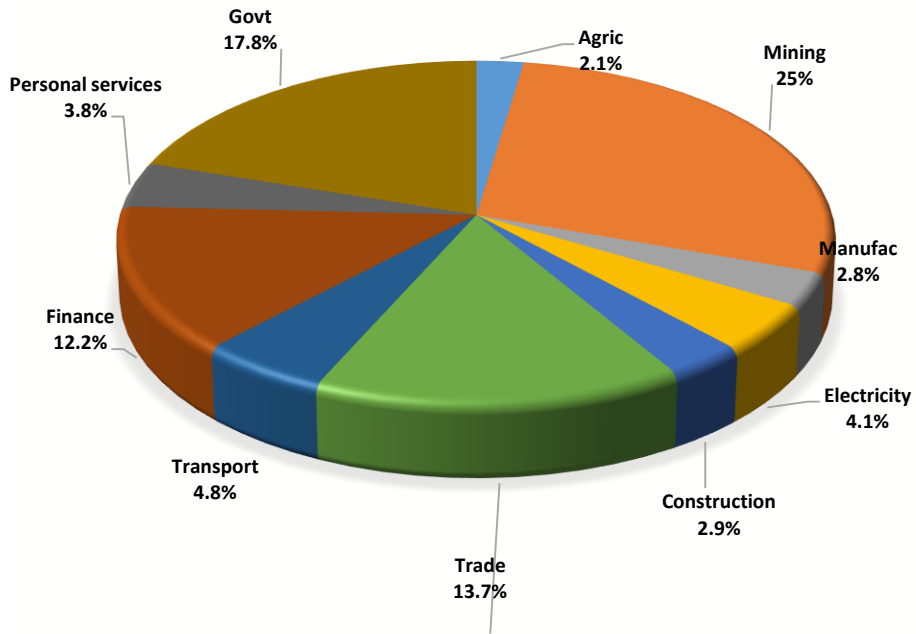
The heartland of southern Africa - development is about people!



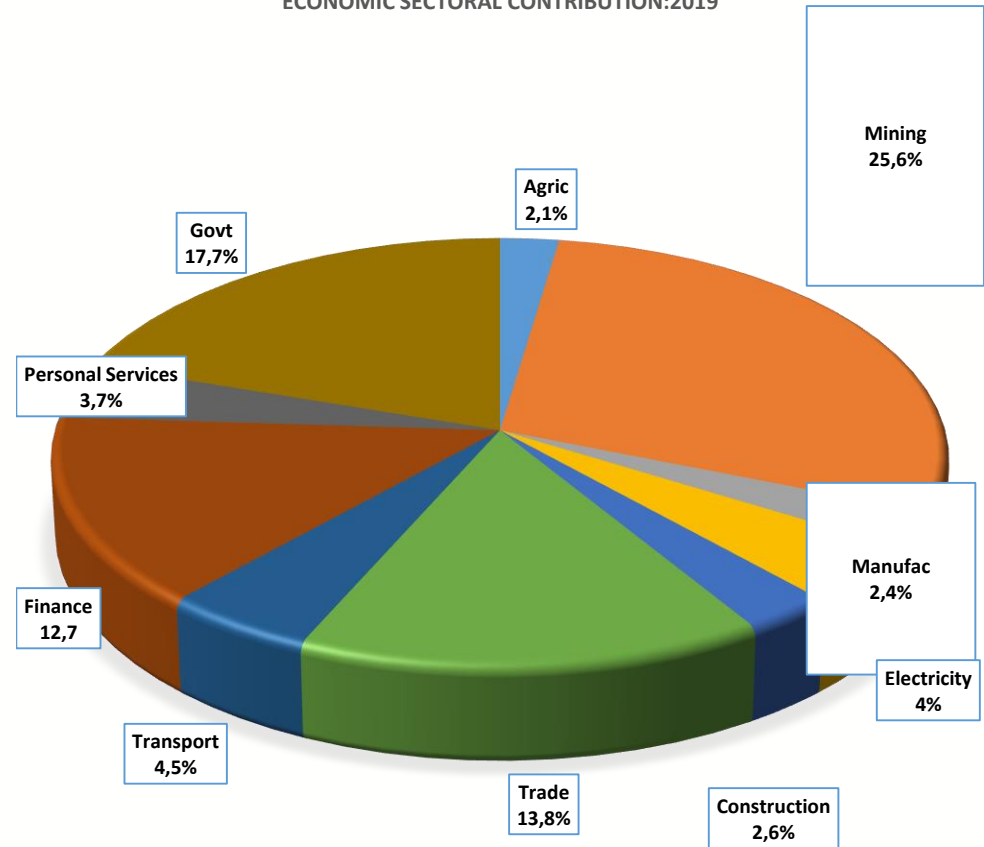
Sectoral Contributions



ECONOMIC SECTORAL CONTRIBUTION - 2014



ECONOMIC SECTORAL CONTRIBUTION:2019



The heartland of southern Africa - development is about people!





LIMPOPO

PROVINCIAL GOVERNMENT
REPUBLIC OF SOUTH AFRICA

Provincial comparative & competitive advantages

Agri-business	Mining	Tourism
Mango	Coal extraction & beneficiation	Golf estate development
Avocado	Platinum Group Metals (PGMs)	Game
Citrus	Chrome	Family recreation
Tomatoes	Ferrochrome	Cultural tourism
Potatoes	Granite	Hotels
Litchi	Diamonds	Nature reserves
Oil extraction	Silicon	Events & conferencing
Macadamia nut processing	Antimony	
Forestry		

- **Sector 1: Industrial Sector:** Automotive, Clothing Textile Leather and Footwear, Gas Chemicals and Plastics, **Renewables/Green Economy**, Steel and Metal Fabrication
- **Sector 2: Agriculture and Agro-processing**
- **Sector 3: Mining:** Minerals and Beneficiation
- **Sector 4: Tourism**
- **Sector 5: High Tech Sectors/Knowledge based:** Digital Economy, **ICT** and Software Production, Health Economy, Defence Economy
- **Sector 6: Creative Sector**
- **Sector 7: Oceans Economy**

The heartland of southern Africa - development is about people!





LIMPOPO

PROVINCIAL GOVERNMENT
REPUBLIC OF SOUTH AFRICA

RATIONALE FOR SELECTING TARGETED PROJECTS

- Promote diversification beyond the economy's current reliance on traditional non-tradable service via the promotion of value-addition-Economic Structural Change.
- Promotion of a labour-absorbing industrialization growth path
- To promote industrialization characterized by participation of historically disadvantaged people and marginalized regions- Inclusive industrialization
- Development of Economic Infrastructure- broadband; reserves and tourism facilities
- Sustainable long-term development – should be underpinned by higher growth, export and labour-intensive, value adding economic activities in the production sectors.



LIMPOPO

PROVINCIAL GOVERNMENT
REPUBLIC OF SOUTH AFRICA

SECTORAL INFORMATION



LIMPOPO

PROVINCIAL GOVERNMENT
REPUBLIC OF SOUTH AFRICA

Mining



The heartland of southern Africa - development is about people



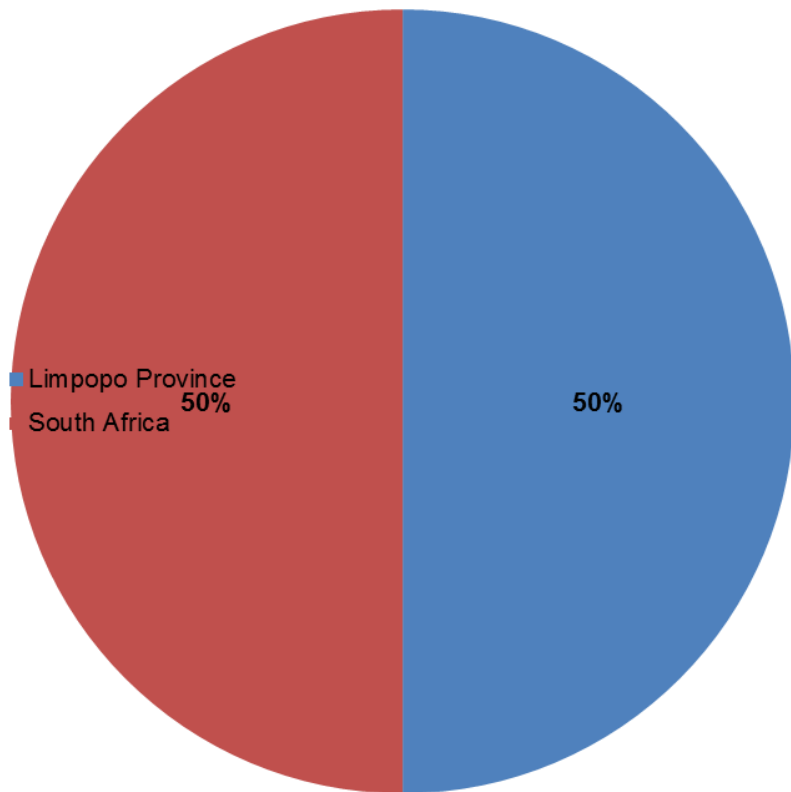
Limpopo mineral deposits

- Gold, diamonds, chrome, platinum, antimony, titanium, iron ore, copper and coal - PGMs
- Approximately 90 operating mines, 50 of which are small to medium sized mines
- There more than 20 mines in the pipeline in the Sekhukhune District
- Home to the Waterberg Coal Basin, which hosts approximately 43% of South Africa's remaining coal reserves (75 billion tons in situ); largest world coal deposit

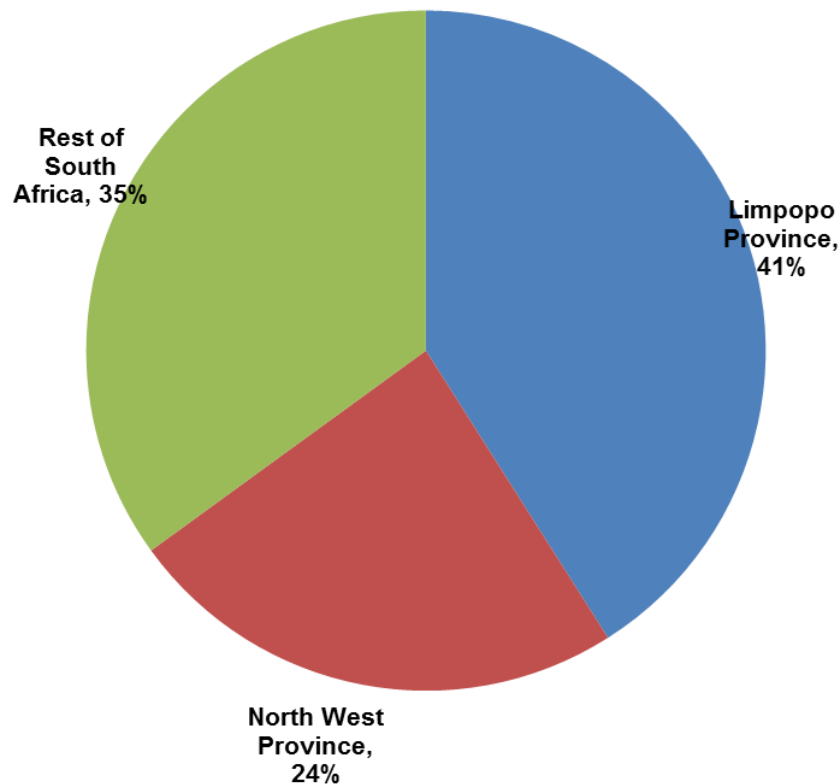


Limpopo mining profile

Coal Reserves

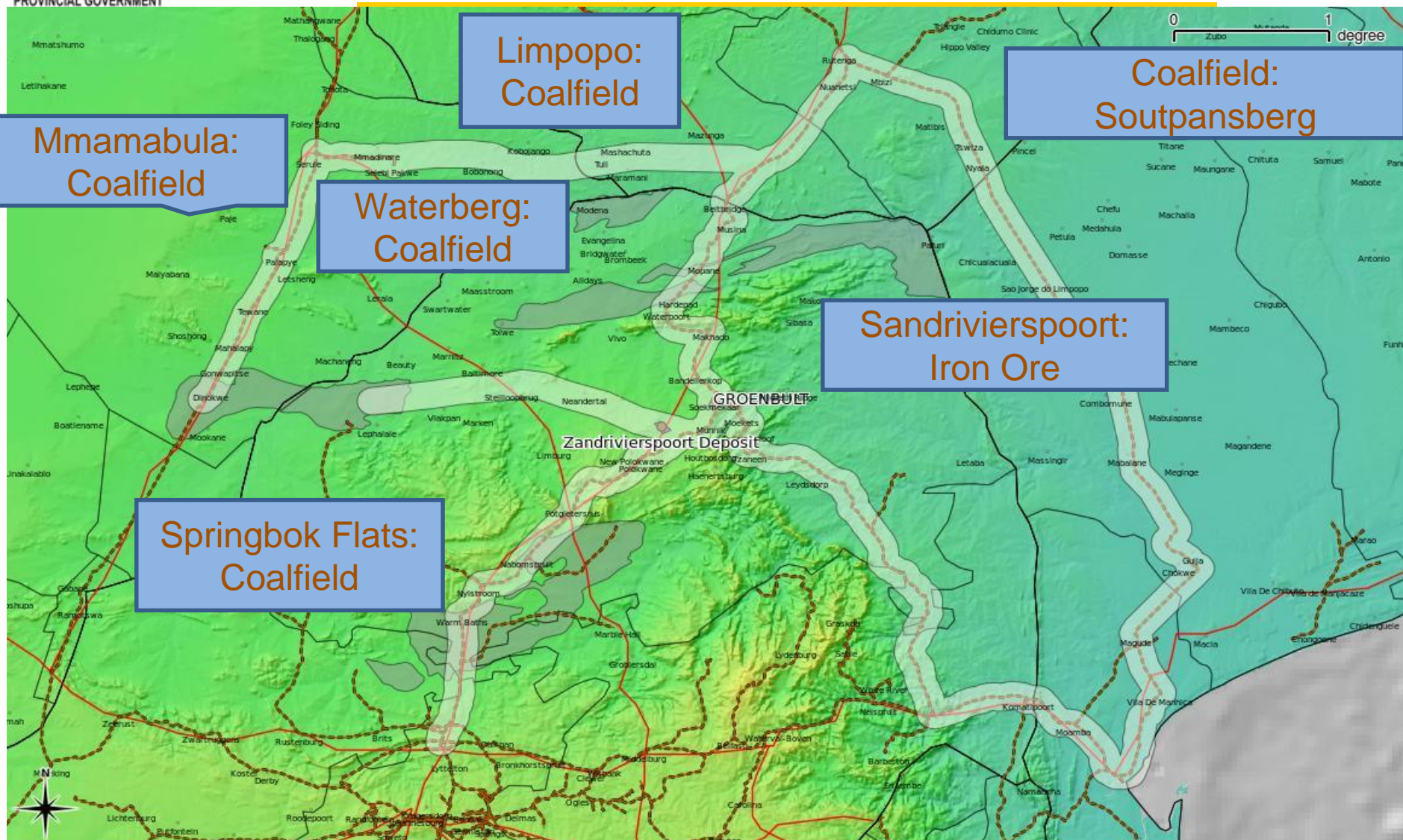


Platinum Group Metals (PGM) reserves





Coalfields: Limpopo, Botswana

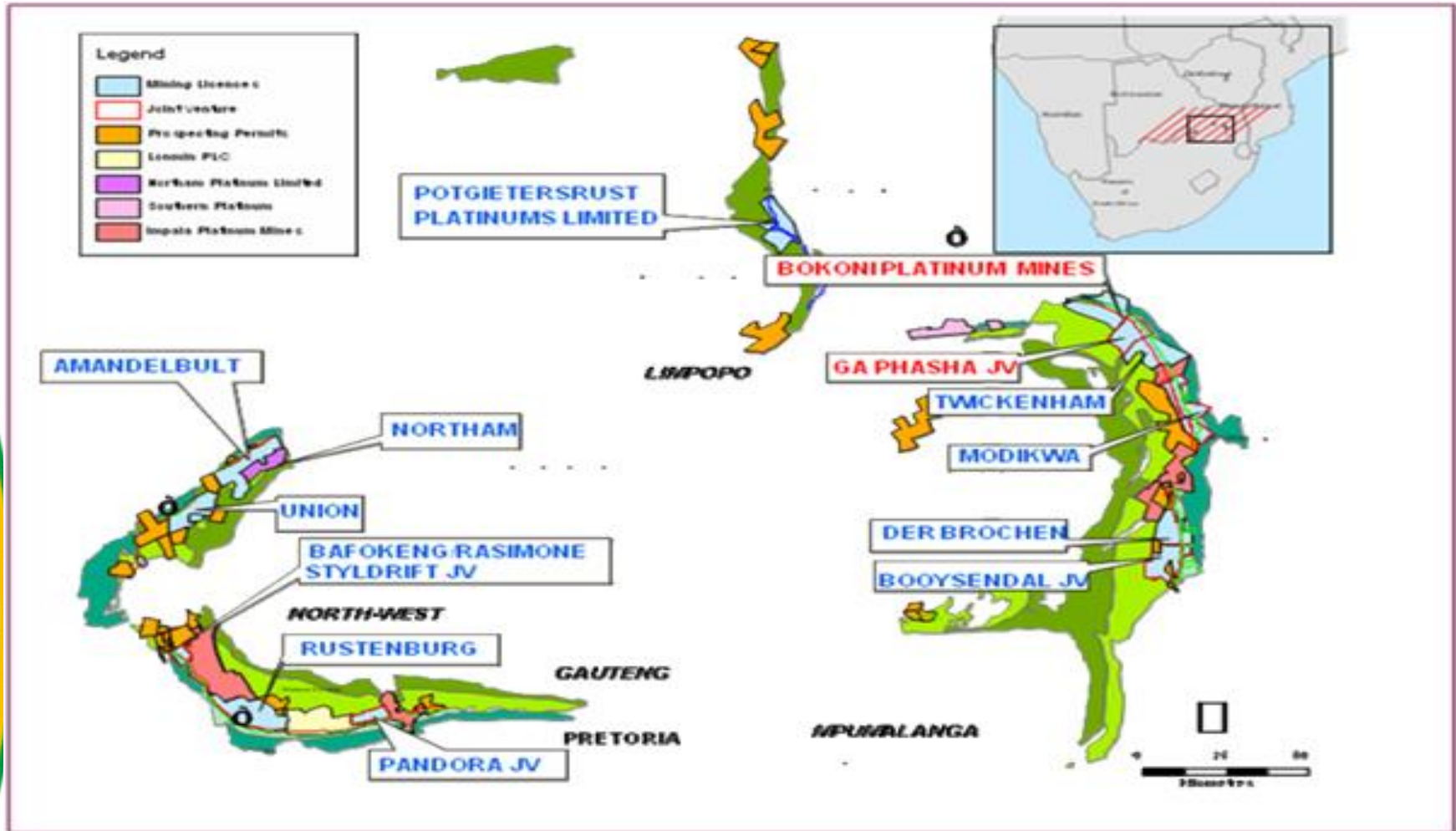




LIMPOPO

PROVINCIAL GOVERNMENT
REPUBLIC OF SOUTH AFRICA

PGMs



The heartland of southern Africa - development is about people



Targeted sectors for investment

- **Platinum value chain:** refinery and fuel cells
- **Chrome beneficiation** into ferrochrome and chrome chemicals
- **Iron beneficiation** into pig iron, steel and stainless steel
- **Vanadium** into vanadium pentoxide and vanadium redox batteries for energy storage
- **Mining inputs:** LHD, yellow metals, pumps, valves and engineering services, conveyor belts and others
- **Renewable energy:** manufacturing of solar panels



Investment opportunities

Cluster	Investment Projects	Products
Iron ore	Steel & iron furnace	Iron pellets and steel
Vanadium cluster	Vanadium pentoxide plant	Vanadium pentoxide and redox batteries
Chrome cluster	Ferrochrome furnace & chemical plant	Ferrochrome and chrome chemicals
Mining input cluster	Manufacturing & services plants	Yellow metal assembly, maintenance, pumps, valves and others
Energy & manufacturing	Manufacturing of components for solar panels	Solar panels / energy
Platinum cluster	Platinum smelter & base metal refinery	Refined platinum, fuel cells & catalytic converters etc.



LIMPOPO

PROVINCIAL GOVERNMENT
REPUBLIC OF SOUTH AFRICA

Agriculture



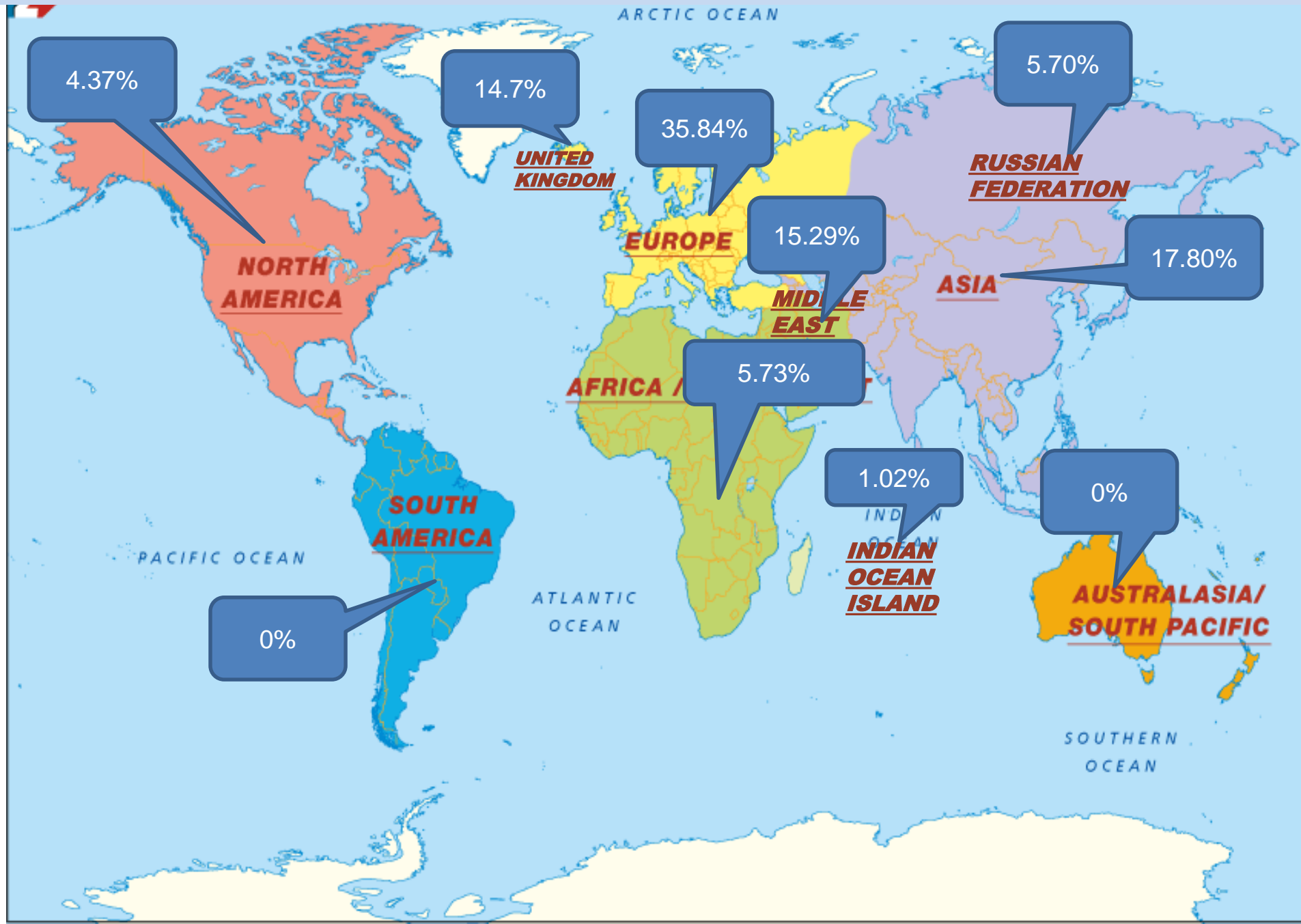
The heartland of southern Africa - development is about people

Sub-tropical fruit industries



Sub-trop Industry Headline Stats: 2016					
	Avocado	Litchi	Macadamia	Mango	Total
RSA area under production (ha)	15 500	1 730	20 000	7 000	44 230
Limpopo production area	61%	19%	30%	66%	
Annual production (t)	115 000	5000	40 000	75 000	235 000
Annual value	R1.3 bil.	R120 mil.	R3.5 bil.	R320 mil.	R5.24 bil
Employment	±5 100	±2 400	± 8 000	±3 000	±18 500
Commercial growers	±340	±100	±500	±120	±1060
Small Holder Farmers	±60	±30	±110	±70	±270

All fruits: Major export destinations - Past 5 years



Investment opportunities in agriculture

Investment opportunities: Fruits

Commodity	Opportunity
Avocado	Expansion of avocado production around Makgoebaskloof and Levubu targeting 2000ha; Investment value 33 million Euros
Macadamia nuts	Investment in macadamia production in Mukumbani Estate targeting 1000ha with a projected cost of 10 million Euros
Mango	With demand for dried mangoes, Limpopo has the potential to expand its production high value varieties. 1000ha mango expansion investment opportunity, with a projected cost of 5 million Euros
Baby vegetable	Exports from Limpopo to Europe with a capacity of 10 tons per day



Other investment opportunities in Limpopo's agricultural industry

- Dried tomatoes processing
- Tomato puree & paste
- Potato canning and mash
- Frozen French fries
- Avocado processing
- Fruit juices
- Essential oils
- Wood processing



Tshakhuma Village

**In all the above opportunities detailed feasibility studies have been completed.
Requirements: to establish processing plants.**



LIMPOPO

PROVINCIAL GOVERNMENT
REPUBLIC OF SOUTH AFRICA

Tourism - Mapungubwe Hill



*The heartland of southern Africa - development is about people*²⁴



Mapungubwe

- Mapungubwe National Park is a World Heritage Site situated at the confluence of the Limpopo & Shashe Rivers at the northern border of South Africa, Zimbabwe & Botswana.
- Artefacts found during excavations reveal that the people of the Mapungubwe Kingdom traded with India and China approximately 1000 years ago.



Kruger National Park

- Situated in the north-eastern part of the Limpopo province, KNP is one of the largest game parks in Africa.
- Boasts unique, unspoilt wilderness & is one of the most famous wildlife sanctuaries in the world.
- 80% of the park lies within the Limpopo Province.
- 2 Important national heritage sites: Iron Age settlement in Thulamela & Masorini Heritage Site in Phalaborwa (both in Limpopo).

Home to the Big Five





LIMPOPO

PROVINCIAL GOVERNMENT
REPUBLIC OF SOUTH AFRICA

Other attractions in Limpopo

Limpopo is positioned as the preferred eco-tourism destination in South Africa, bordered by 3 Southern African countries boasting:

- 54 Provincial nature reserves
- Custodians of 70% of protected land area in South Africa with 3 million hectares of wildlife ranches
- 2 Trans-frontier parks
- 2 UNESCO World Heritage Sites: Makapan's Valley WHS & Mapungubwe WHS
- 3 National Parks: Marakele, Mapungubwe & Kruger National Park (KNP) & host to 70% of KNP (13 640 km² of 19 485 km²)
- 55% of South Africa's birds species total count
- Beautiful un-spoilt scenery, biospheres, landscapes and vistas
- Strategic geographical location for trans-frontier linkages with Botswana, Zimbabwe and Mozambique



Tourism growth clusters & investment opportunities

Focus area	Deliverables
Golf & Game Cluster	<ul style="list-style-type: none">Establishment of products and destinations which have golf offerings with wildlife experiences. Doorndraai.
Special Interest Cluster	<ul style="list-style-type: none">Investment in areas with unique experiences for specific markets interested in birding, adventure tourism, 4x4 events, guided walks in wilderness areas, heritage tourism as well as pilgrimage packages. Nylsvlei Nodal and Birding route, Makapans Valley nodal and cultural route, Mapungubwe, Wonderkop, Blouberg and Langjan, Muti wa vha Tsonga, Modjadji, Tjate, Makgabeng.
Family & Recreation Cluster	<ul style="list-style-type: none">Family and recreation facilities. Rust de Winter Dam, Doorndraai Dam, Schiunsdraai (Flag Boshielo Dam), Mokolo Dam, De Hoop Dam, Masebe, D’Nyala, Makuya, Nwanedi.
Safari & Hunting Cluster	<ul style="list-style-type: none">Investment in safari and hunting cluster. Wonderkop, Blouberg and Langjan,
Mega-Conservation Cluster	<ul style="list-style-type: none">Investments in government and private sectors owned game reserves. Mokolo Dam, Marakele / Welgevonden, Mapungubwe, Lekgalameetse, Wolksberg, Thabina, Bewaarskloof, Mafefe, Musina, Nwanedi, Zoutpansberg / Greater Sougozwi conservancy
Mice Cluster	<ul style="list-style-type: none">Investment in the MICE Cluster which is about Meetings, Incentive Travel, Conferencing and Events. Capricorn / Polokwane, Percy Fyfe, Nwanedi, Masebe, D’Nyala, Nylsvlei



Investment opportunities in other emerging sectors

Green economy:

- Renewable energy
- Recycling

ICT:

- Broadband
- Innovation hub / Science Hub

Manufacturing:

- Sorghum processing
- Packaging

Services:

- Back office support
- Logistics

Chemicals & Pharmaceuticals





LIMPOPO

PROVINCIAL GOVERNMENT
REPUBLIC OF SOUTH AFRICA

Key Programmes for Industrialization

- Special Economic Zones:
 - Musina- Makhado SEZ (MMSEZ)
 - Tubatse SEZ



MMSEZ- Targeted Clusters

Energy and Metallurgy

- Power Plant
- Steel Plant / Stainless Steel Plant
- Coking Plant
- Pig Iron Plant
- Ferro Manganese Plant
- Ferro Chrome Plant
- Chrome Plating
- Lime Plant



Agro-Processing

- Food Processing Facility
- Fresh Produce Handling
- Canning Facility
- Timber Processing



Logistics

- Logistics Services
- Warehousing
- Distribution
- Container Yard
- Vehicle Distribution
- Cold Storage
- Bonded Warehouses



General Manufacturing

- Electromechanical operations
- OE manufacturing plants
- Automobile Centre
- Component manufacturing
- Fertilisers
- Agro-chemicals
- Petro-chemicals



TUBATSE SEZ- Targeted Sectors

SECTOR	CLUSTERS	INVESTMENT OPPORTUNITIES	PRODUCTS
Mineral Beneficiation	Platinum	Smelter and Refinery	<ul style="list-style-type: none"> Refined Platinum
	Chrome	Chrome Chemical plant, Ferrochrome	<ul style="list-style-type: none"> Chrome Chemicals Ferrochrome
	Vanadium	Vanadium Pentoxide plant,	<ul style="list-style-type: none"> Lithium & Redox Batteries
Mining Inputs Supply	Manufacturing, Assembling and Components	Assembling and Fabrication plant Electrical and electronics Engineering Services	<ul style="list-style-type: none"> Mining equipment's and Components Roof bolts Off-road tyres Hydrogen fuel cell dozers
Energy	Green energy Fossil fuel	Solar Energy generation Pyrolysis Plant, Oil Blending plant	<ul style="list-style-type: none"> Solar energy Diesel and gas Tyre carbon black Lubricants
General Manufacturing	Chemical, Pharmaceutical, General Processing	Sweet sorghum processing plant Modular concrete slab manufacturing plant Water pipes manufacturing plant Heavy metal assembly plant PV modules manufacturing plant Yarn mill Torrefication plant	<ul style="list-style-type: none"> Ethanol and sugar Modular concrete products Pipes Mining equipment PV modules Protective clothing Charcoal

The heartland of southern Africa - development is about people



SEZ benefits and incentives

- **High-end infrastructure**
- **One-Stop Shop (Investment Centre)**
- **Specific Incentive:**
 - ***15% corporate tax***
 - ***Building tax allowance***
 - ***Employment tax incentive***
 - ***Vat exemption***



How to reach us:

LIMPOPO PROVINCIAL GOVERNMENT

www.limpopo.gov.za

LIMPOPO ECONOMIC DEVELOPMENT AGENCY (LEDA)

24 Market Street

Polokwane, Limpopo Province

South Africa

Tel: +27 15 295 5171

Mobile/Cell: +27 82 417 2953

Website: www.leda.co.za

LIMPOPO TOURISM AGENCY

Southern Gateway Ext.4

N1 Main Road, Polokwane, Limpopo Province

South Africa

Tel: +27 15 293 3600

Website: www.golimpopo.com

**LOOKING FORWARD
TO A
MUTUALLY REWARDING
BUSINESS RELATIONSHIP**

THANK YOU